

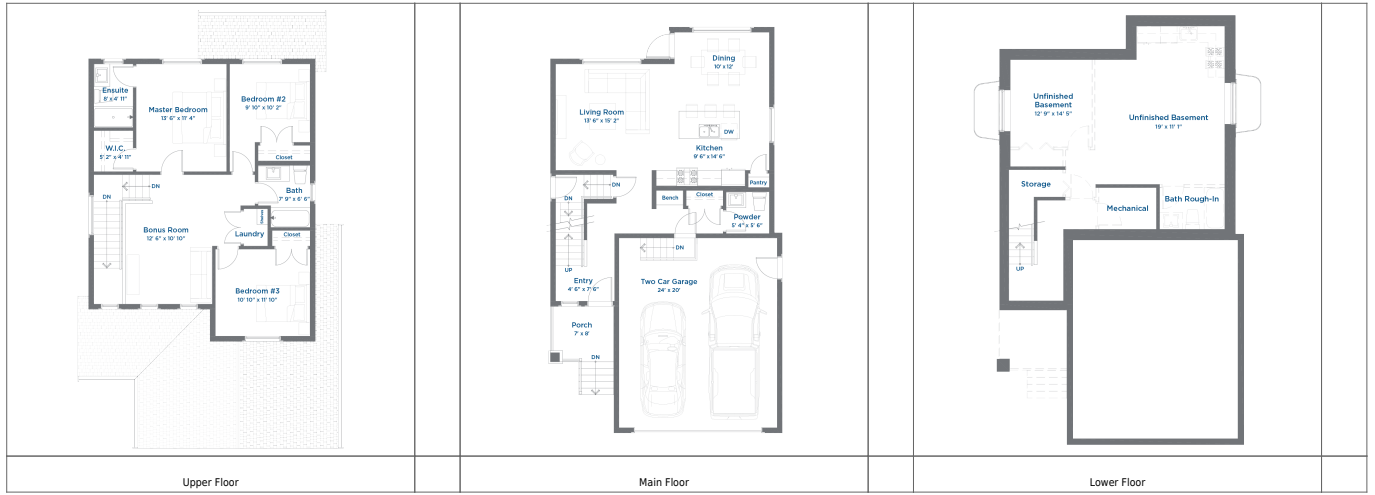
215 Greyeyes-Steele Way - PROMO PRICE!

Price:	\$449,900
Home Collection:	Single Family Homes
Home Type:	The Clarke
Size:	1,659 sqft.
Levels:	3
Bed:	3
Bath:	2.5
Extra:	Bonus
Parking Spaces:	2
Parking Type:	Attached



This Clarke home model features 1,654 square feet, 3 bedrooms and 2 bathrooms, and an attached garage. The open-concept gourmet kitchen features classic white shaker cabinets, a large island and includes quartz countertops and stainless steel appliances. The popular upstairs bonus room provides flexible space for either additional workspace or a place for family time. Plus the unique feature of the basement with a separate entrance gives you the option to build a legal suite for extra income potential.

Floorplans



See the listing at <http://meadowsliving.ca/home-listings/215-greeyes-steele-way/>.