



Phone: 306-291-8785

Email:

sales@meadowsliving.ca

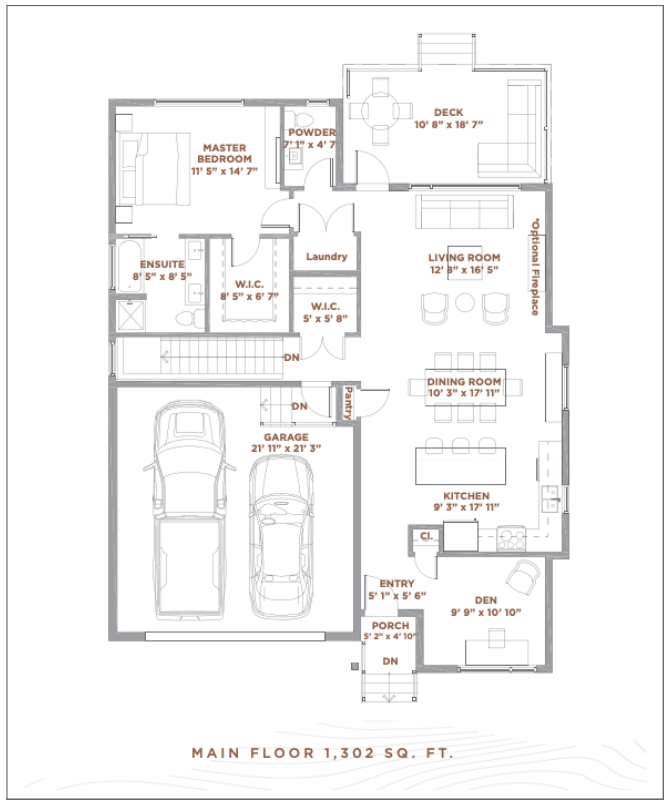
# #11- 105 Hathway Crescent

<b>Price:</b>	\$639,900
<b>Home Collection:</b>	Bungalows
<b>Home Type:</b>	The Crescent Single Family
<b>Size:</b>	1,302 sqft.
<b>Levels:</b>	2
<b>Bed:</b>	1
<b>Bath:</b>	1.5
<b>Extra:</b>	Den
<b>Parking Spaces:</b>	2
<b>Parking Type:</b>	Attached

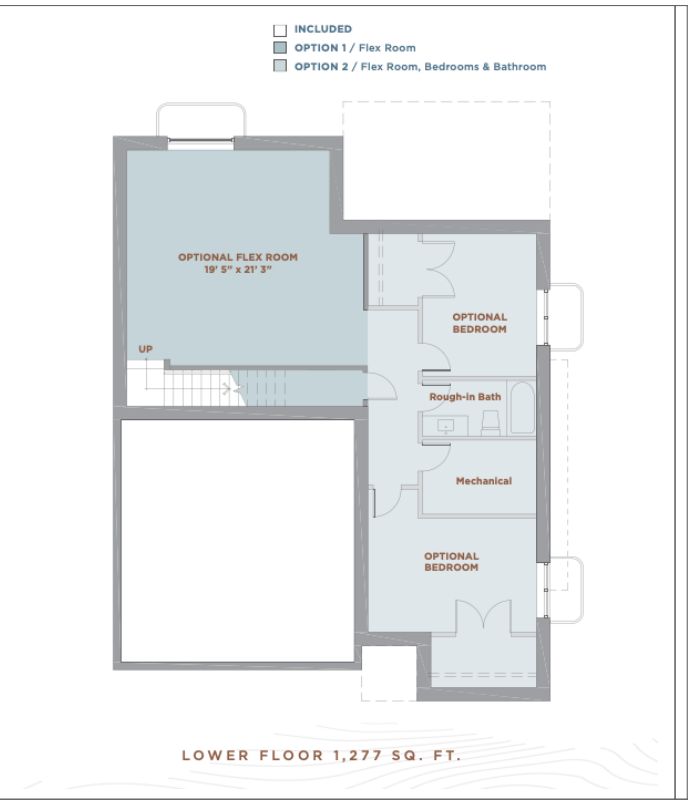


Our Crescent Bungalows are now available! Get into this exclusive community with this move in ready home! This plan features 1302 square feet of living space all on one level with an added front den. The home features a large open concept dining, living and kitchen space, perfect for entertaining. Our gourmet kitchen is finished with beautiful white and wood shaker cabinets with upgraded black cabinet hardware and beautiful white quartz countertops. The kitchen also includes an upgraded stainless steel appliance package. The home also features oversized windows throughout, a large primary suite on the main floor with an ensuite, walk in closet and main floor laundry. Luxury vinyl plank runs throughout the main floor with upgraded carpet in the bedroom and large format porcelain tile. Customize your space with options for basement finishing. This unit features a large corner lot that is backing Struthers Park!

## Floorplans



Main Floor



Lower Floor

See the listing at <https://meadowsliving.ca/home-listings/11-105-hathway-crescent-quick-possession-2/>.