



Phone: 306-291-8785

Email:

sales@meadowsliving.ca

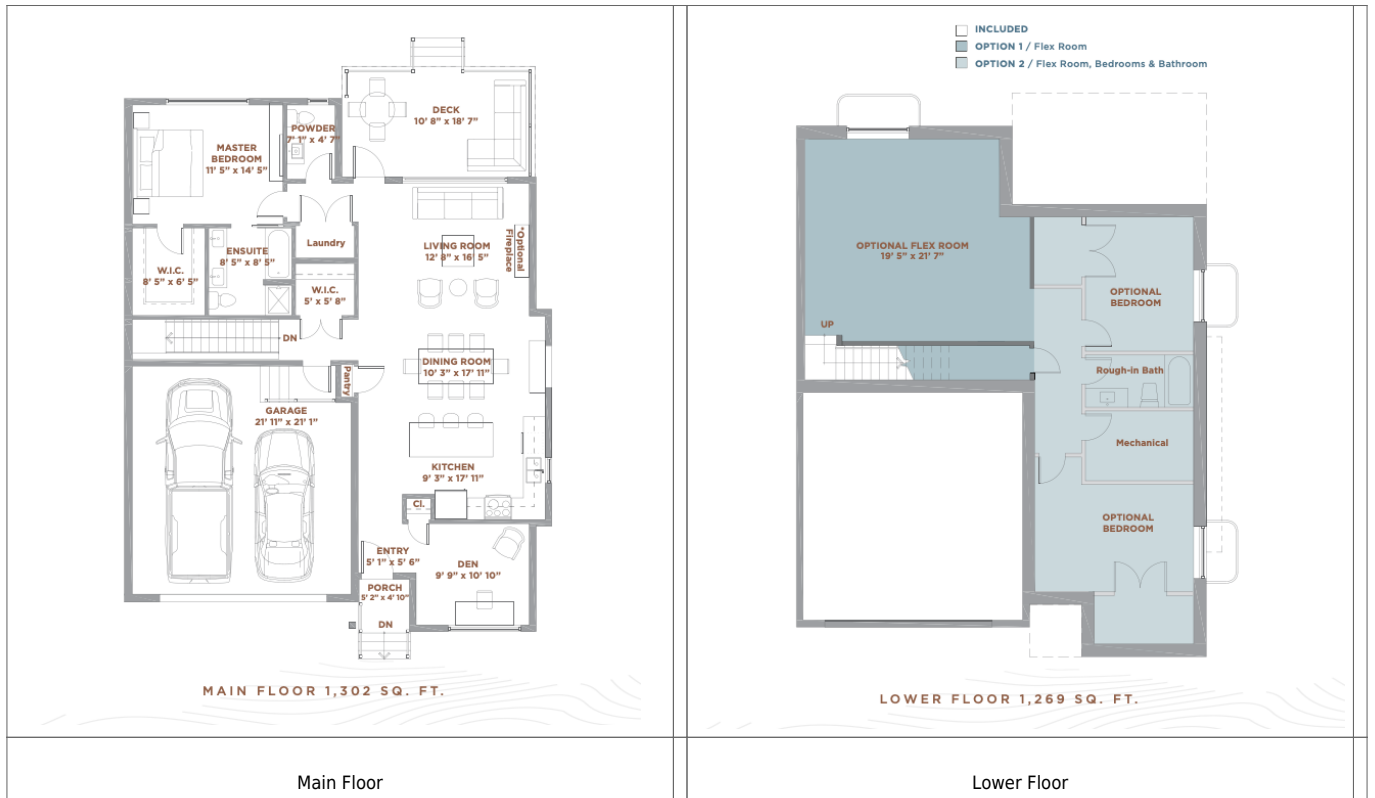
#18- 105 Hathway Crescent- QUICK POSSESSION

Price:	\$589,900
Home Collection:	Bungalows
Home Type:	The Crescent Duplex 1
Size:	1,302 sqft.
Levels:	2
Bed:	1
Bath:	1.5
Extra:	Den
Parking Spaces:	2
Parking Type:	Attached



Our Crescent Bungalows are now available! Get into this exclusive community with this move in ready home! This plan features 1302 square feet of living space all on one level with an added front den. The home features a large open concept dining, living and kitchen space, perfect for entertaining. Our gourmet kitchen is finished with beautiful white and wood shaker cabinets with upgraded black cabinet hardware and beautiful white quartz countertops. The kitchen also includes an upgraded stainless steel appliance package. The home also features oversized windows throughout, a large primary suite on the main floor with an ensuite, walk in closet and main floor laundry. Luxury vinyl plank runs throughout the main floor with upgraded carpet in the bedroom and large format porcelain tile. Customize your space with options for basement finishing.

Floorplans



Main Floor

Lower Floor

See the listing at <https://meadowsliving.ca/home-listings/18-105-hathway-crescent-quick-possession/>.