



Phone: 306-291-8785

Email:

sales@meadowsliving.ca

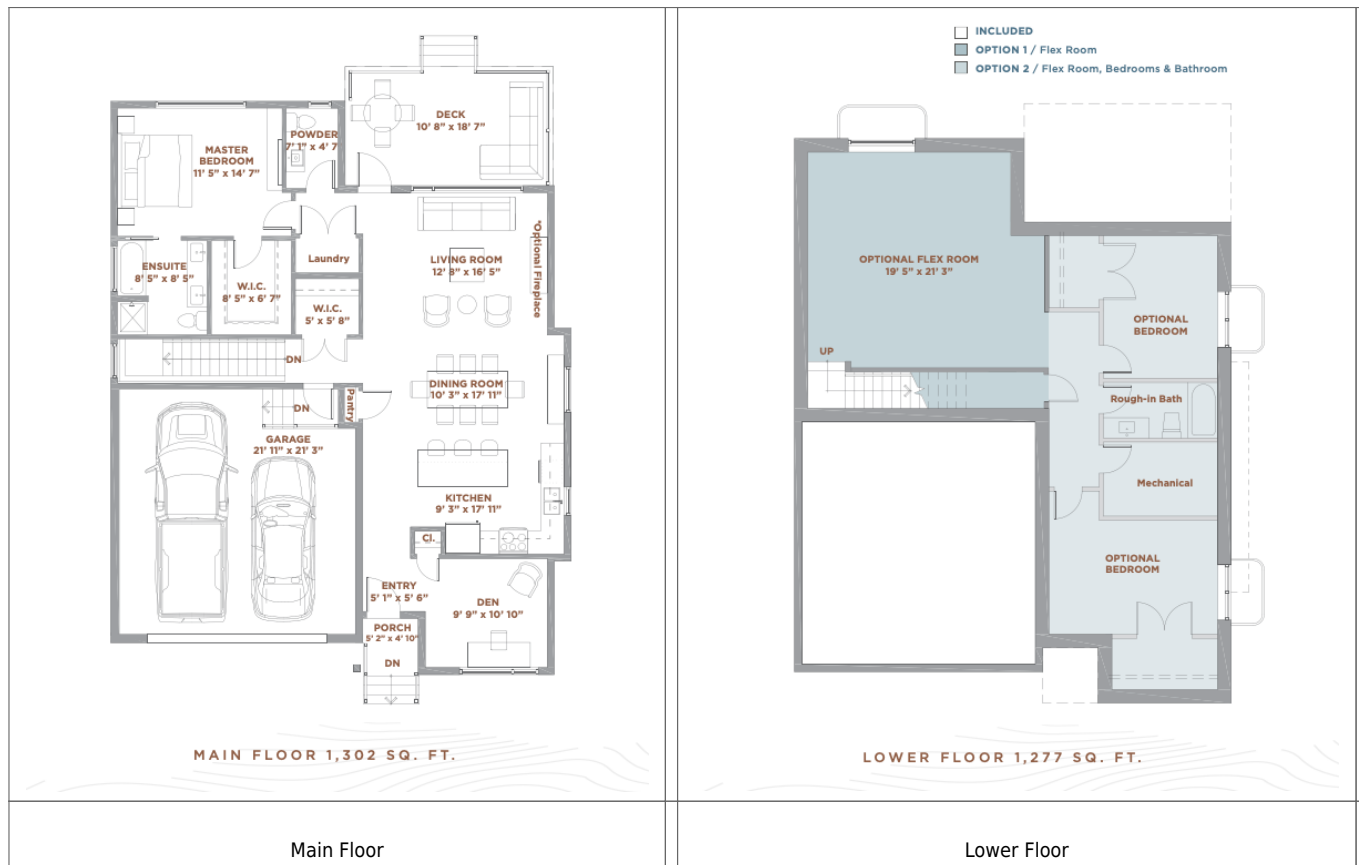
#28 - 105 Hathway Crescent - SOLD

Price:	\$649,900
Home Collection:	Bungalows
Home Type:	The Crescent Single Family
Size:	1,302 sqft.
Levels:	2
Bed:	1
Bath:	1.5
Extra:	Den
Parking Spaces:	2
Parking Type:	Attached



This Crescent detached bungalow home features 1302 square feet of living space all on one level with an added front den. The home features a large open concept dining, living and kitchen space, perfect for entertaining. Our gourmet kitchen cabinets are available in the choice of 2 finishes, with black cabinet hardware and beautiful white quartz countertops. The home also features oversized windows throughout, a large primary suite on the main floor with an ensuite, walk in closet and main floor laundry. Luxury vinyl plank runs throughout the main floor with upgraded carpet in the bedroom and large format porcelain tile. Customize your space with options for basement finishing. This unit has a beautiful backyard space backing the green space in Struthers Park!

Floorplans



See the listing at <https://meadowsliving.ca/home-listings/22-105-hathway-crescent-quick-possession-2/>.