




Phone: 306-291-8785

Email:

sales@meadowsliving.ca

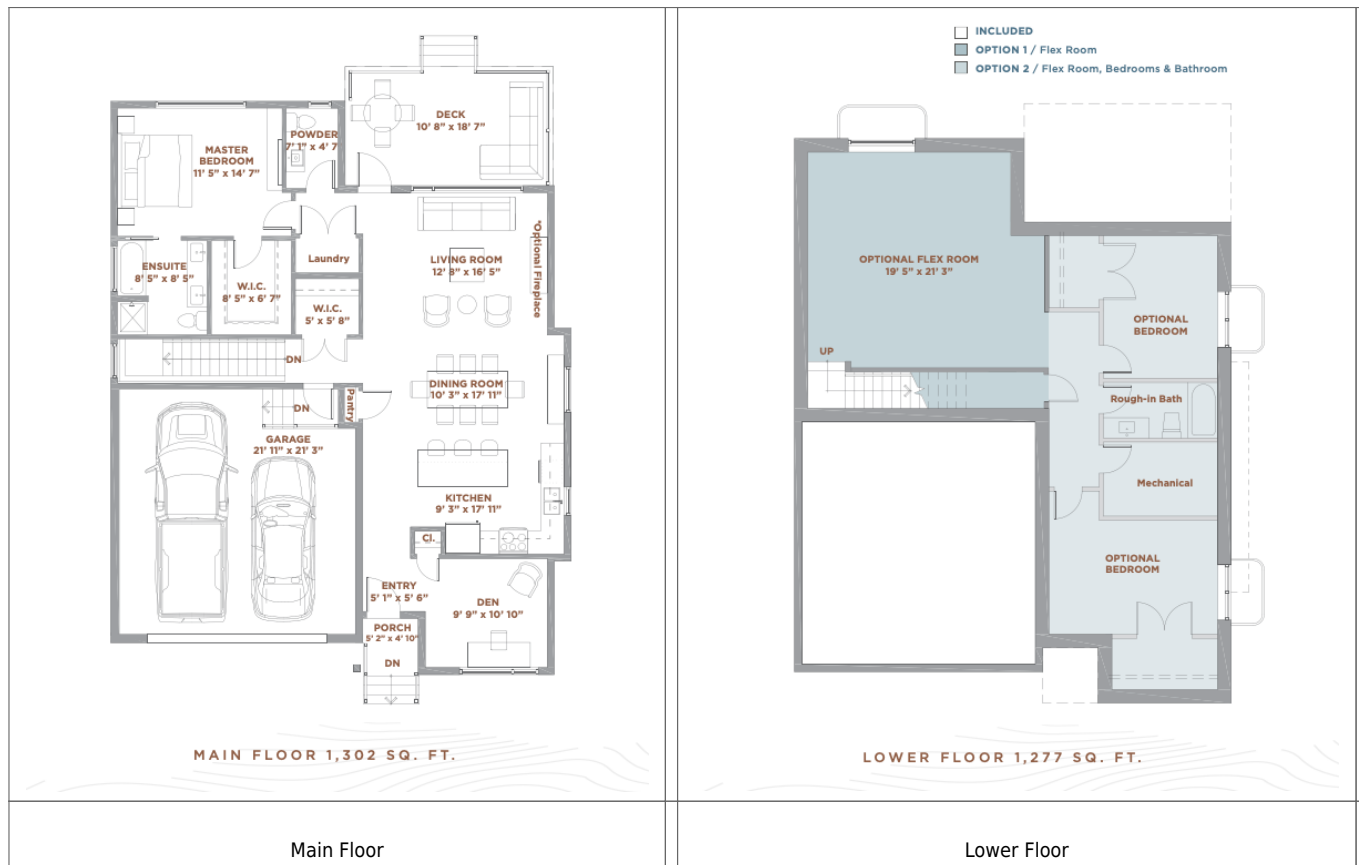
#24- 105 Hathway Crescent

Price:	\$639,900
Home Collection:	Bungalows
Home Type:	The Crescent Single Family
Size:	1,302 sqft.
Levels:	2
Bed:	1
Bath:	1.5
Extra:	Den
Parking Spaces:	2
Parking Type:	Attached



Our Crescent Bungalows detached home plan features 1302 square feet of living space all on one level. The home features a large open concept dining, living and kitchen space, perfect for entertaining. Our gourmet kitchen is finished with white shaker cabinets and a wood island accent. Both come with upgraded black cabinet hardware and beautiful white quartz countertops. The kitchen also includes an upgraded stainless steel appliance package. The home also features oversized windows throughout, a large primary suite on the main floor with and ensuite, walk in closet and main floor laundry. Luxury vinyl plank runs throughout the main floor with upgraded carpet in the bedroom and large format porcelain tile. Customize your space with options for basement finishing, fireplace and much more! This home will be starting soon, so contact us today to make it your own!

Floorplans



See the listing at <https://meadowsliving.ca/home-listings/24-105-hathway-crescent/>.