




Phone: 306-291-8785

Email:

sales@meadowsliving.ca

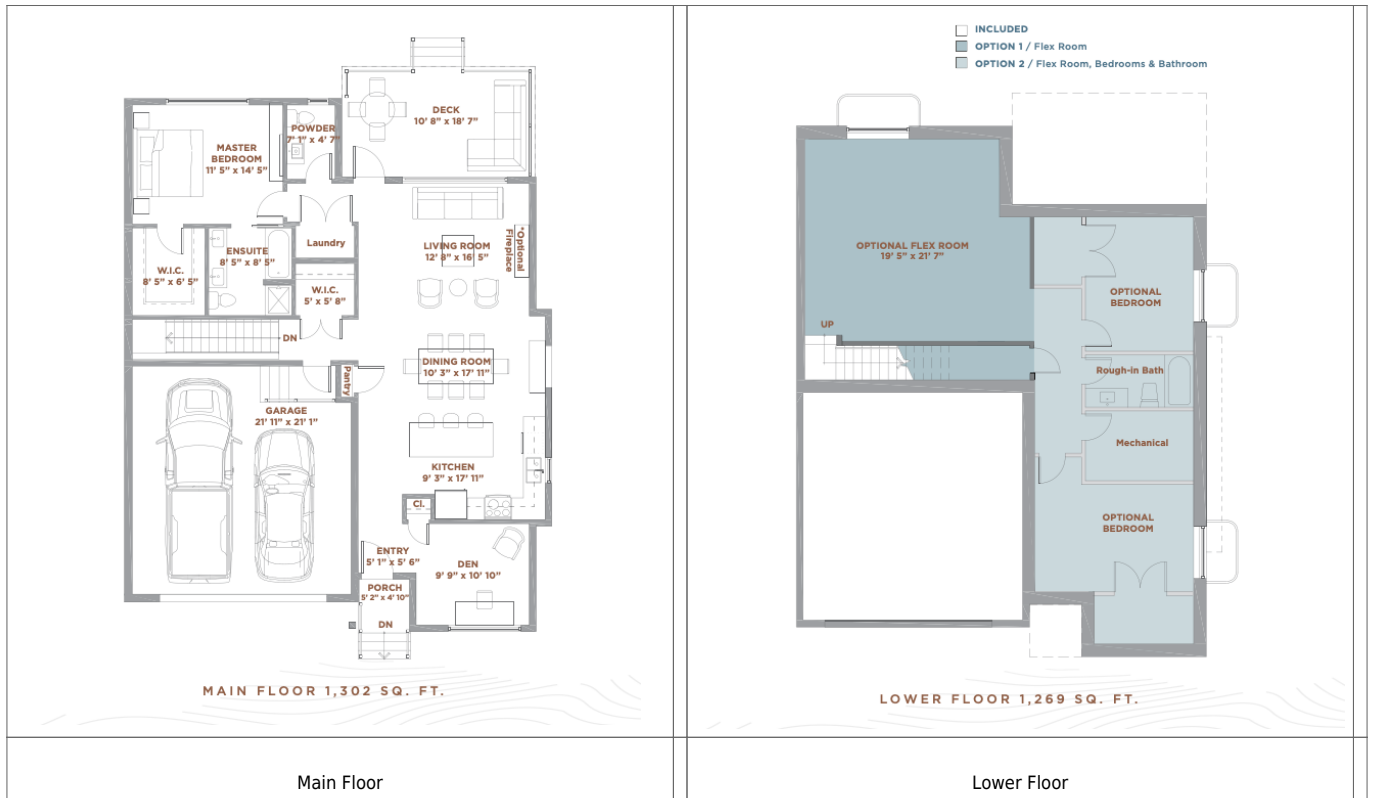
#37 - 105 Hathway Crescent - WINTER 2026

Price:	\$609,900
Home Collection:	Bungalows
Home Type:	The Crescent Duplex 1
Size:	1,302 sqft.
Levels:	2
Bed:	1
Bath:	1.5
Extra:	Den
Parking Spaces:	2
Parking Type:	Attached



This Duplex 1 floorplan offers 1,302 square feet of comfortable single-level living. The open-concept dining, living, and kitchen area creates an inviting space ideal for both daily living and entertaining. The gourmet kitchen features contemporary cabinetry with sleek black hardware, white quartz countertops, and an upgraded stainless steel appliance package. Oversized windows bring in plenty of natural light, while the main-floor primary suite includes an ensuite, walk-in closet, and convenient access to laundry. The main floor also includes a convenient den just off the front entry. Luxury vinyl plank flooring extends through the main living areas, complemented by upgraded carpet and large-format porcelain tile. Optional basement finishing allows you to tailor the home to your needs.

Floorplans



See the listing at <https://meadowsliving.ca/home-listings/37-105-hathway-crescent-fall-2026/>.