



Phone: 306-291-8785

Email:

sales@meadowsliving.ca

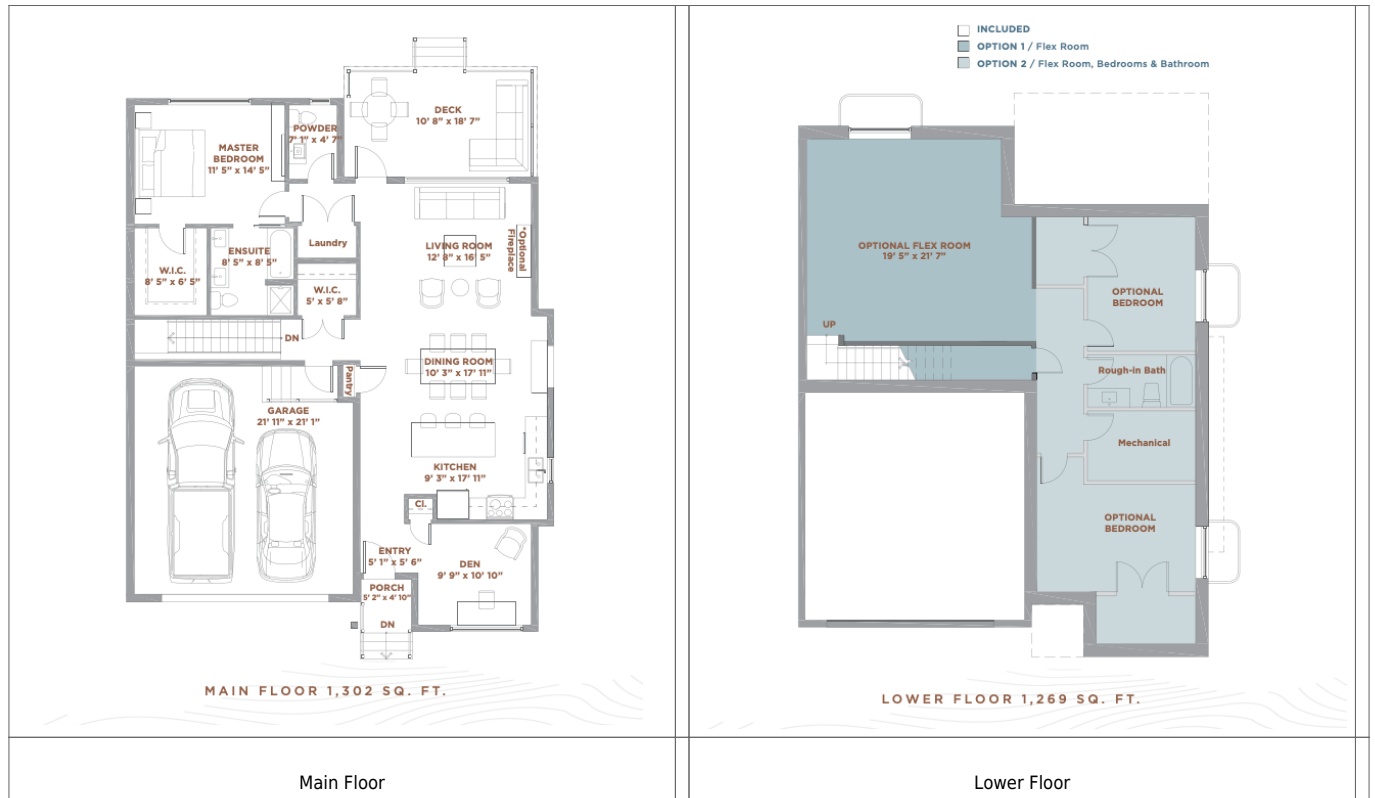
#33 - 105 Hathway Crescent - SPRING 2026

Price:	\$549,900
Home Collection:	Bungalows
Home Type:	The Crescent Duplex 1
Size:	1,302 sqft.
Levels:	2
Bed:	1
Bath:	1.5
Extra:	Den
Parking Spaces:	2
Parking Type:	Attached



This Duplex 1 floorplan offers 1,302 square feet of single-level living with a front den. Its open-concept dining, living, and kitchen area is perfect for entertaining, featuring contemporary cabinets with black hardware, white quartz countertops, and upgraded stainless steel appliances. Oversized windows brighten the home, and the main-floor primary suite includes an ensuite, walk-in closet, and convenient laundry access. Luxury vinyl plank runs through the main living areas, with upgraded carpet and large-format porcelain tile. Optional basement finishing lets you customize your space.

Floorplans



See the listing at <https://meadowsliving.ca/home-listings/crescent-duplex-1/>.