

HOMES

GREEN LIGHT TO 'MOVE THAT BUS'

Do the words "move that bus!" get you inexplicably excited? Are you a sucker for a makeover?

Well, good news. Extreme Makeover: Home Edition is being rebooted for HGTV.

Originally hosted by Ty Pennington, pictured, and broadcast on ABC from 2003 to 2012, the reality show will air 10 new episodes next year. No word yet on who the new host or cast members will be.

"This is a big win for HGTV and we



can't wait to put our stamp on it," said Kathleen Finch, Discovery Inc.'s chief lifestyle brands officer.

As in the original series, each episode will follow designers and carpenters as they fully renovate one home belonging to a family that's facing a struggle such as the death of a family member or illness.

Pennington appears in Trading Spaces, another comeback show for HGTV.

Melissa Hank

SASKATOON STARPHOENIX SATURDAY, FEBRUARY 2, 2019

SECTION E

FORMULA FOR SUCCESS

Arbutus Properties' new release targets homebuyers seeking luxury, affordability

JEANNIE ARMSTRONG

The Saskatoon real estate market appears to be tightening, with an 11-per-cent reduction in residential MLS listings in 2018 compared to the previous year.

With about 1,000 fewer new listings on the market during the past 12 months, housing choices within certain price ranges aren't as plentiful as before.

Arbutus Properties' newest release of new homes targets home buyers seeking luxury touches at an affordable price point.

Arbutus has announced a new grouping of its bestselling Morris model homes, located in the Meadows community, within Rosewood.

Arbutus Properties recently opened a new Morris Laneway show home at 138 Greyeyes-Steele Way. The 1,393-square-foot, two-storey offers three bedrooms and 2.5 bathrooms and is priced at \$359,900, including all taxes.

"The Morris is our most popular model, first introduced in Saskatoon in the fall of 2016," says Jody Minakakis, sales manager with Arbutus Properties.

"We sold out of the last few phases of available lots for the Morris, but because of its popularity, we're bringing it back."

This newest release makes 11 Morris Laneway homes available, he adds.

What's the secret to the popularity of the Morris?

"It's a home that appeals to all demographics. In terms of layout, amenities and price point, the Morris has been a very popular model. We've had everyone buy them: First-time buyers, new residents to Canada, empty nesters and growing families," says Minakakis.

The Morris stands out on the block with its distinctive West Coast craftsman style, beginning with its inviting front veranda.

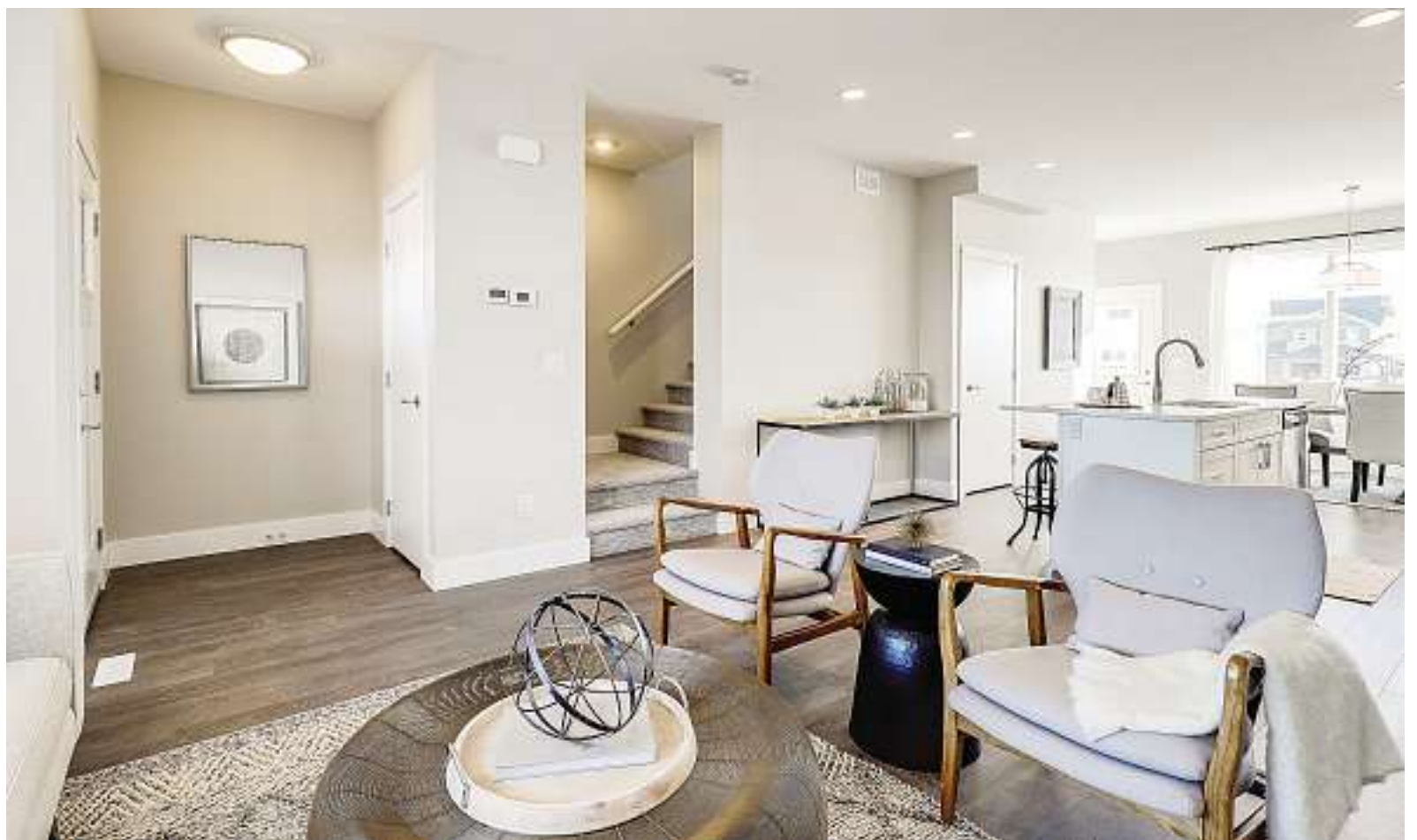
"The large front porch is reflective of the Meadows' vision of a friendly, front porch-living community. Craftsman appeal is also reflected in the use of Hardie cement board siding and composite wood trim, both very durable products," Minakakis says.

The main floor features an open concept layout, complemented by nine-foot ceilings. Large triple pane windows on either end of the space ensure an abundance of natural light from dawn until dusk.

At the heart of the main floor great room is a gourmet kitchen, dressed in Shaker-style cabinetry by Kitchen Craft.

"It's a galley-style kitchen which really integrates into the open concept design. One benefit of the galley kitchen is that you can accommodate a really large island," says Minakakis.

Luxury touches abound in the kitchen, including a stylish tile backsplash, quartz countertops, LED pot lights, closet pantry, wide plank wood grain laminate flooring and a Whirlpool stainless



Two colour palettes are available in Arbutus Properties' Morris model homes: latte, shown above, and espresso.

PHOTOS: SCOTT PROKOP PHOTOGRAPHY

steel appliance package.

Durability is always a vital factor when Arbutus selects finishes for its new homes, adds Minakakis.

"We maintain our homes' durability by selecting durable products. A lot of research goes into the products we put into our homes."

Two different colour palettes have been developed for the new release of Morris homes: Espresso and latte.

The light-toned latte colour palette was selected for the new show home.

The second floor is home to three generously sized bedrooms, a laundry room with its own linen closet, and two full-sized bathrooms. The large master suite has its own ensuite bath as well as a large walk-in closet with a window.

The basement of the Morris show home is open for future development.

"With a separate side entrance, the basement is designed and plumbed for the option of a one-bedroom legal suite.

"The owners can also choose to develop the basement into their own additional living space," says Minakakis.

New homeowners won't have to worry about the expense of landscaping their front yards, he adds.

"The front yards will be completely landscaped. The backyards include a double garage pad."

The Morris Laneway show home, at 138 Greyeyes-Steele Way, is open for viewing Saturdays and Sundays from 1 p.m. to 5 p.m.; Tuesdays, Wednesdays and Thursdays from 4 p.m. to 8 p.m. For complete details, visit meadowsliving.ca.

jarmstrong@postmedia.com



Arbutus Properties selected finishes that deliver style and durability for its show home. The kitchen features include Shaker-style cabinetry, quartz countertops and wood grain, wide-plank laminate flooring.



HIGHLANDER RIDGE II

BUNGALOW TOWNHOMES IN MONTGOMERY PLACE



Feel the
FREEDOM

1206 & 1244 SQ. FT. | 2 BEDROOMS | 2 BATHROOMS
MAIN FLOOR LAUNDRY | DOUBLE ATTACHED GARAGE
YARD AND SNOW MAINTENANCE PROVIDED

**ONLY 4
UNITS LEFT!**

STARTING AT
\$385,900



SHOW HOME:
#1-3210 11th St W
Hours: Mon-Thurs: 1-5 PM
Sat, Sun & Holidays: 1-5 PM



Trish London
306.227.7471
tlondon@northridge.sk.ca

306.242.2434 | northridge.sk.ca

MARKETED BY **North Ridge**
DEVELOPMENT CORPORATION

